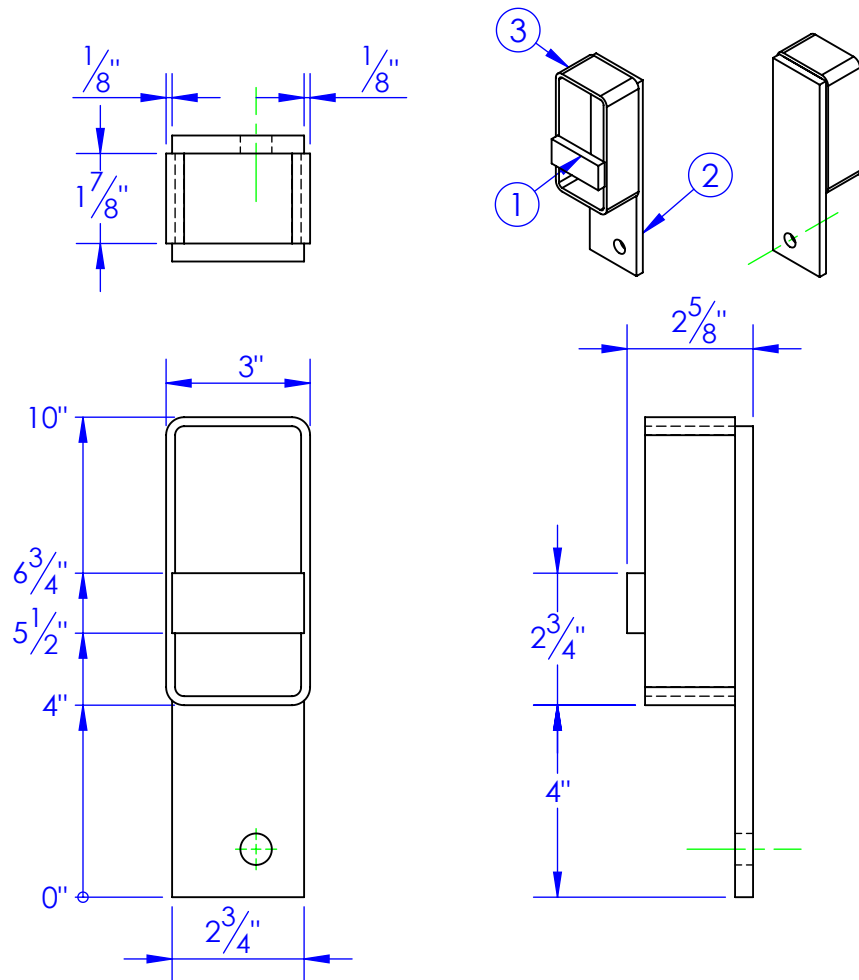


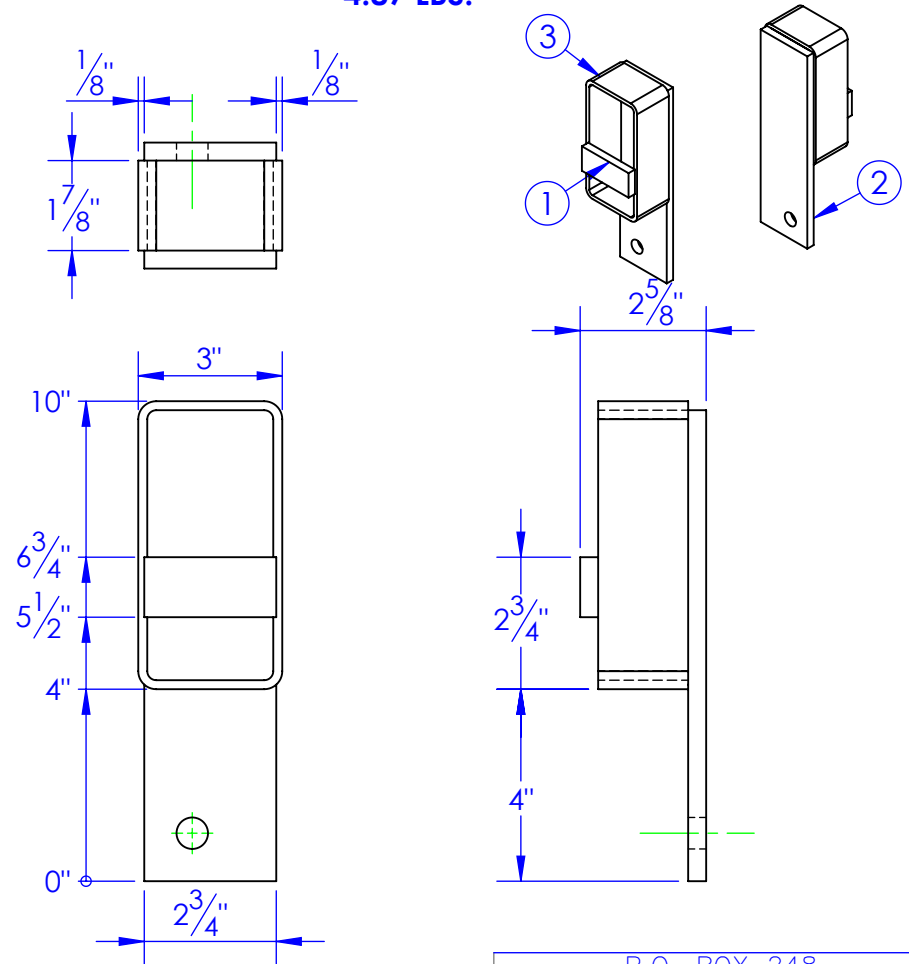
| ITEM NO. | PART NUMBER | DESCRIPTION | MATERIAL | DRAWING # | QTY. |
|----------|-----------------------|-----------------------------------|------------------|-----------|------|
| 1 | FI .375 X 1.25 L 2.75 | LENGTH: 2-3/4" | FI 3/8x1-1/4" | STOCK | 1 |
| 2 | FP-LL STRAP 9.8125 | LEVEL LOK MOUNTING STRAP 9-13/16" | ST-FI 3/8x2-3/4" | 90-2824 | 1 |
| 3 | RT 6x3x.1875 L 1.875 | LENGTH: 1-7/8" | ST-RT 6x3x3/16 | STOCK | 1 |

**FP-FLL4-1 DS
DRIVER SIDE FLL-4 FRONT BRKT
4.87 LBS.**



| ITEM NO. | PART NUMBER | DESCRIPTION | MATERIAL | DRAWING # | QTY. |
|----------|-----------------------|-----------------------------------|------------------|-----------|------|
| 1 | FI .375 X 1.25 L 2.75 | LENGTH: 2-3/4" | FI 3/8x1-1/4" | STOCK | 1 |
| 2 | FP-LL STRAP 9.8125 | LEVEL LOK MOUNTING STRAP 9-13/16" | ST-FI 3/8x2-3/4" | 90-2824 | 1 |
| 3 | RT 6x3x.1875 L 1.875 | LENGTH: 1-7/8" | ST-RT 6x3x3/16 | STOCK | 1 |

**FP-FLL4-1 PS
PASSENGER SIDE FLL-4 FRONT BRKT
4.87 LBS.**



| REV. | REVISIONS | DATE |
|------|--|------------|
| A | UPDATED TO NEW DWG FROM 10-1851 D | 1/22/2013 |
| B | REV.TAB HEIGHT TO 2-1/2 TO MATCH JIG | 11/18/2013 |
| C | REVISE POSITION OF FI .375 x 1.25 L 2.75 | 6/21/2017 |

PROPRIETARY AND CONFIDENTIAL
THE INFORMATION CONTAINED IN THIS DRAWING IS THE SOLE PROPERTY OF TRIPLE C INC. ANY REPRODUCTION IN PART OR AS A WHOLE WITHOUT THE WRITTEN PERMISSION OF TRIPLE C INC. IS PROHIBITED.

| | | | |
|--|--|----------------------------|-----------|
| DIMENSIONS ARE IN INCHES TOLERANCES: FRACTIONAL $\pm 1/16$ ANGULAR: MACH ± 1 BEND \pm TWO PLACE DECIMAL ± 0.010 THREE PLACE DECIMAL ± 0.005 | | NAME | DATE |
| DRAWN | | HEATH | 6/21/2017 |
| PART # | | SEE DWG | |
| ASM # | | | |
| COMMENTS: | | FRONT BRACKET FLL-4 WLDMT. | |
| MATERIAL | | --- | |
| DO NOT SCALE DRAWING | | | |

P.O. BOX 248,
SABETHA, KS 66534

TRIPLE C
INC.

| | | |
|------------|--------------|--------------|
| SIZE | DWG. NO. | REV. |
| A | 90-1844-22 C | C |
| SCALE: 1:4 | WEIGHT: -- | SHEET 1 OF 1 |